

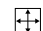
SistemC – Architettura

– Monoporosa • Porous Single Firing • Monoporeuse • Poröse Einbrandfliese • Monoporosa • Монопороза
 – Monocottura • Single Firing • Monocuisson • Einmalbrand • Monococción • Плитка Однократного Обжига

 **Lux**
20x20

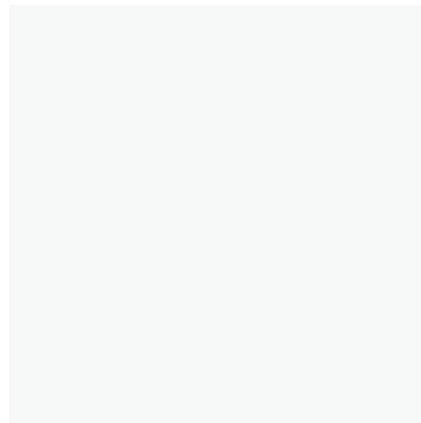
Monoporosa • Porous Single Firing • Monoporeuse • Poröse Einbrandfliese • Monoporosa • Монопороза

Conforme • According to • Conforme • Gemäß • Conforme • Соответствует
UNI EN 14411 - L BIII

 **Lux**
10x10 Modul • 10x30
10x30 Architettura+

Monocottura • Single Firing • Monocuisson • Einmalbrand • Monococción • Плитка Однократного Обжига

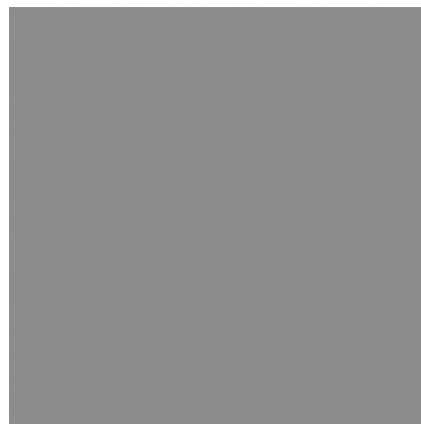
Conforme • According to • Conforme • Gemäß • Conforme • Соответствует
UNI EN 14411 - K BIII



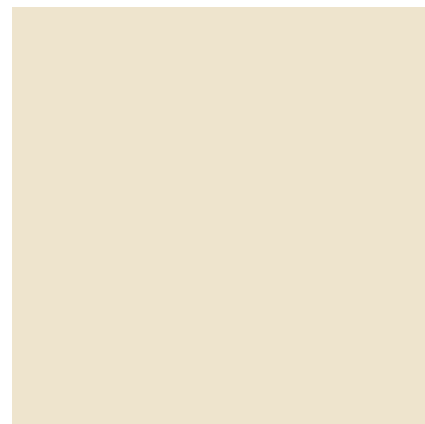
Arch.Bianco (Bianco Classic New)



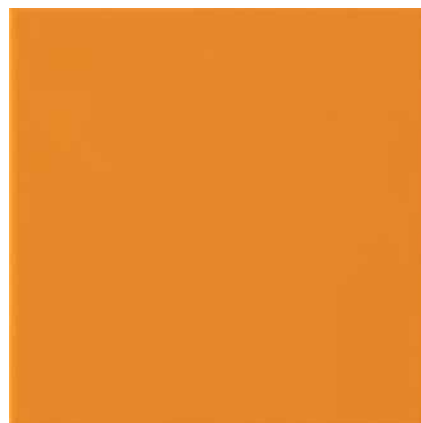
Arch.Ghiaccio



Arch.Cemento (Lanci)



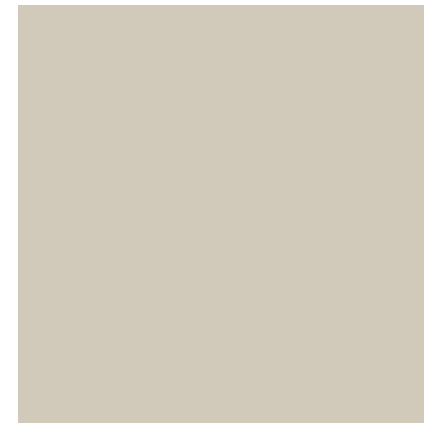
Arch.Avorio (Antelami New)



Arch.Ambra (Bill)



Arch.Ocra (Herrera)



Arch.Perla (Cigoli)



Arch.Grigio (Aalto New)



Arch.Fumo



Arch.Sabbia



Arch.Rosso



Arch.Ametista



Arch.Verde



Arch.Giada (Malevic)



Arch.Pistacchio



SystemC – Architettura

- Monoporosa • Porous Single Firing • Monoporeuse • Poröse Einbrandfliese • Monoporosa • Монопороза
 - Monocottura • Single Firing • Monocuisson • Einmalbrand • Monococción • Плитка Однократного Обжига



Arch.Aqua



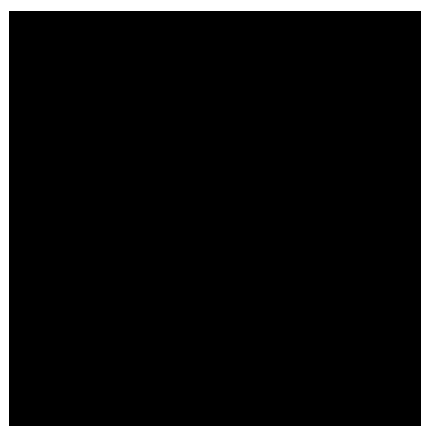
Arch.Turchese



Arch.Blu



Arch.Cobalto



Arch.Nero (Wright New)

Formati • Sizes • Formats • Formate • Formatos • Форматы



20x20

- ME83 Arch. Bianco (Bianco Classic New)
- MJ27 Arch. Ghiaccio
- ME8X Arch. Perla (Cigoli)
- ME81 Arch. Grigio (Aalto New)
- MJ28 Arch. Fumo
- ME80 Arch. Cemento (Lanci)
- ME8Y Arch. Avorio (Antelami New)
- MJ2J Arch. Sabbia
- ME8C Arch. Ambra (Bill)
- ME77 Arch. Odra (Herrera)
- MJ29 Arch. Rosso
- MJ2N Arch. Ametista
- MJ2D Arch. Verde
- MJ2C Arch. Turchese
- ME8N Arch. Giada (Malevic)
- MJ2G Arch. Pistacchio
- MJ2E Arch. Aqua
- MJ2B Arch. Blu
- MJ2A Arch. Cobalto
- ME8Z Arch. Nero (Wright New)



10x10 Modul

- ME90 Arch. Bianco (Bianco Classic New)



10x10 Modul Punto Colla

- MCYE Arch. Bianco (Bianco Classic New)



10x30

- KYWU Arch. Bianco (Bianco Classic New)
- MJ0A Arch. Grigio (Aalto New)
- MJOB Arch. Fumo
- KYWX Arch. Cemento (Lanci)
- KYWY Arch. Avorio (Antelami New)
- MJ0F Arch. Odra (Herrera)
- MJ0K Arch. Turchese
- KYWV Arch. Nero (Wright New)



10x30 Lux Architettura+

- MJAX Arch. Bianco (Bianco Classic New)*



10x30 Lux Architettura+

- KJ9S Arch. Bianco (Bianco Classic New)*

* Struttura a rilievo di spessore complessivo 8,5 mm abbinabile al formato 10x30 di spessore 7,5 mm. • Relief texture with a total thickness of 8.5 mm; can be used along with the 7.5 mm thick 10x30 size • Structure en relief d'une épaisseur totale de 8,5 mm pouvant être associée au format 10x30 de 7,5 mm d'épaisseur • Reliefstruktur mit einer Gesamtstärke von 8,5 mm passend zum Format 10x30 mit 7,5 mm Stärke. • Estructura en relieve de espesor total 8,5 mm combinable con el formato 10x30 de 7,5mm de espesor. • Рельефная структура общей толщиной 8,5 мм, сочетаемая с форматом 10x30 толщиной 7,5мм.

Imballi Packing Emballages Verpackungen Embalajes Упаковки	Pezzi Pieces Stck Pièces Piezas Штуки	Mq Sq. Mt Qm Mq Кв. м	Kg Kr	Scatole Box Karton Boite Caja Коробки	Mq Sq. Mt Qm Mq Кв. м	Kg Kr	Spessore Thickness Dicke Épaisseur Espesor Толщина
20x20	40	1,60	19,48	75	120,00	1.460,92	7,0
10x10 Modul	100	1,00	13,50	72	72,00	972,05	7,0
10x10 Modul Punto Colla	96	1,00	12,96	66	66,02	855,64	7,0
10x30	34	1,02	15,45	66	67,32	1.020,06	7,5
10x30 Lux Struttura MJAX	24	0,72	11,95	72	51,84	860,70	8,5
10x30 Lux Struttura MJ9S	24	0,72	11,95	72	51,84	860,70	8,5



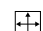
SystemC – Città

– Monoporosa • Porous Single Firing • Monoporeuse • Poröse Einbrandfliese • Monoporosa • Монопороза
 – Monocottura • Single Firing • Monocuisson • Einmalbrand • Monococción • Плитка Однократного Обжига

 **Naturale/Matt**
20x20

Monoporosa • Porous Single Firing • Monoporeuse • Poröse Einbrandfliese • Monoporosa • Монопороза

Conforme • According to • Conforme • Gemäß • Conforme • Соответствует
UNI EN 14411 - L BIII

 **Naturale/Matt**
10x10 • 10x30

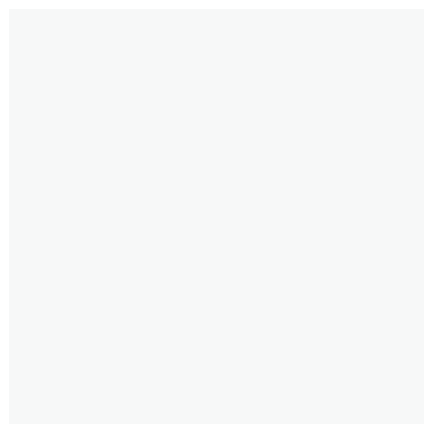
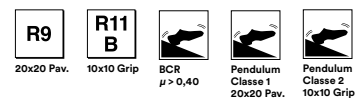
Monocottura • Single Firing • Monocuisson • Einmalbrand • Monococción • Плитка Однократного Обжига

Conforme • According to • Conforme • Gemäß • Conforme • Соответствует
UNI EN 14411 - J BIIa

 **Naturale/Matt**
20x20 Pav.

Monocottura • Single Firing • Monocuisson • Einmalbrand • Monococción • Плитка Однократного Обжига

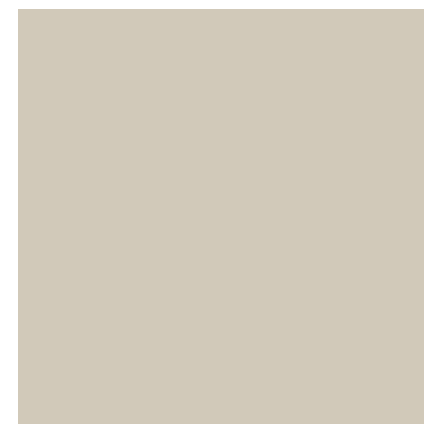
Conforme • According to • Conforme • Gemäß • Conforme • Соответствует
UNI EN 14411 - H BIb



Città Bianco (Helsinki New)



Città Ghiaccio



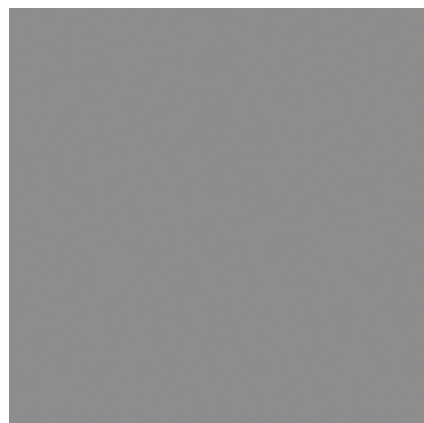
Città Perla (Copenhagen)



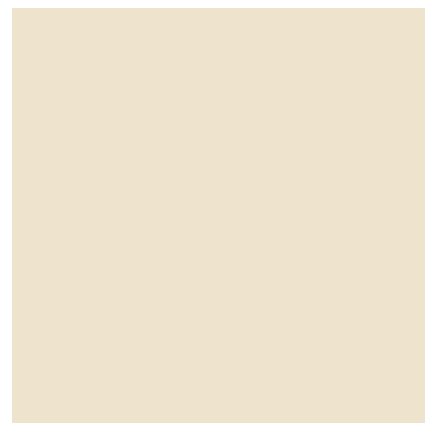
Città Grigio (Lipsia New)



Città Fumo



Città Cemento (Londra)



Città Avorio (Atene)



Città Sabbia



Città Creta



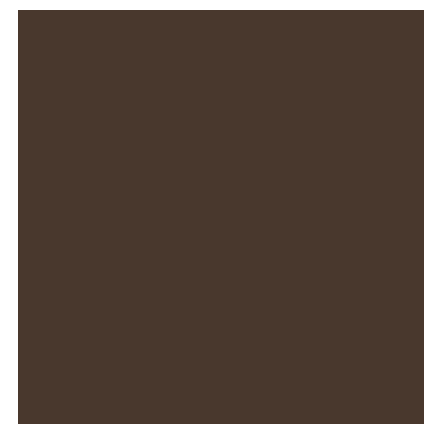
Città Tortora



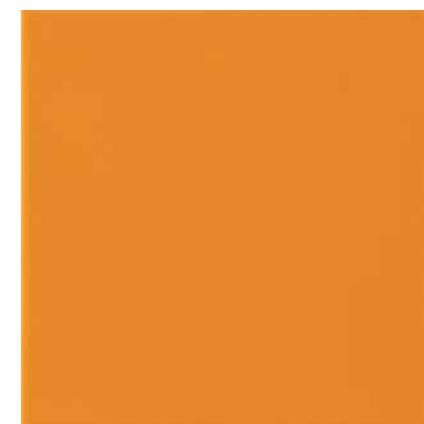
Città Argilla



Città Fango



Città Agata (Cordoba)



Città Ambra (Brasilia)



Città Ocra (Caracas)



SistemC – Città

- Monoporosa • Porous Single Firing • Monoporeuse • Poröse Einbrandfliese • Monoporosa • Монопороза
 - Monocottura • Single Firing • Monocuisson • Einmalbrand • Monococción • Плитка Однократного Обжига



Città Rosso E Città Ametista E Città Verde (Salonico New) E



Città Aqua E Città Blu E Città Cobalto E



Città Turchese E Città Giada (Manila) E Città Pistacchio E



Città Nero (Dakar New) E

- 10x30**
- KYWP Città Bianco (Helsinki New)
 - MI0Q Città Grigio (Lipsia)
 - MI0R Città Fumo
 - KYWS Città Cemento (Londra)
 - KYWT Città Avorio (Atene)
 - MI0T Città Tortora
 - MI0V Città Odra (Caracas)
 - MI0W Città Rosso
 - MI0X Città Ametista
 - MI0Z Città Turchese
 - MJ09 Città Pistacchio
 - MI0Y Città Cobalto
 - KYWQ Città Nero (Dakar)

- 10x10 Punto Colla**
- MD2P Città Bianco (Helsinki New)
 - MD2K Città Cemento (Londra)

Pezzi Speciali Special Trims Pièces Spéciales Formteile Piezas Especiales Специальные Изделия	BATTISCOPA A SGUSCIA 10x20
Città Bianco (Helsinki New)	MURZ
Città Cemento (Londra)	MDCU
Città Blu	MJ6L

Formati • Sizes • Formats • Formate • Formatos • Форматы

- 20x20**
- MEFJ Città Bianco (Helsinki New)
 - MJON Città Ghiaccio
 - MEFC Città Perla (Copenhagen)
 - MEFG Città Grigio (Lipsia)
 - MJOP Città Fumo
 - MEFF Città Cemento (Londra)
 - MEFD Città Avorio (Atene)
 - MJOY Città Sabbia
 - MJ0X Città Creta
 - MJ0Z Città Tortora
 - MJ1B Città Argilla
 - MJ12 Città Fango
 - MEE9 Città Agata (Cordoba)
 - MEEP Città Ambra (Brasilia)
 - MEEK Città Odra (Caracas)
 - MJ0Q Città Rosso
 - MJ1S Città Ametista
 - MEE3 Città Verde (Salonico New)
 - MJ0T Città Turchese
 - MEE0 Città Giada (Manila)
 - MJ0W Città Pistacchio
 - MJ0U Città Aqua
 - MJ0S Città Blu
 - MJ0R Città Cobalto
 - MEFE Città Nero (Dakar)
- 20x20 Pav.**
- MJ1V Città Bianco (Helsinki New)
 - MJ1X Città Grigio (Lipsia)
 - MJ21 Città Cemento (Londra)
- 3x10 ANG. INT.**
- MURR Città Bianco (Helsinki New)
 - MDCW Città Cemento (Londra)
- 3x10 ANG. EST.**
- MURV Città Bianco (Helsinki New)
 - MDCY Città Cemento (Londra)
- 3x20 CANALETTA EST.**
- MURD Città Bianco (Helsinki New)
 - MDC8 Città Cemento (Londra)
- 3x20 CANALETTA INT.**
- MURH Città Bianco (Helsinki New)
 - MDC4 Città Cemento (Londra)
- 3x3 PIEDE**
- MURM Città Bianco (Helsinki New)
 - MDC6 Città Cemento (Londra)
- 3x3 UNGHIA INT.**
- MUR8 Città Bianco (Helsinki New)
 - MDC0 Città Cemento (Londra)

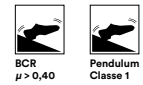
Imballi Packing Verpackungen Emballages Embalajes Упаковки	Pezzi Pieces Stck Pièces Piezas Штуки	Mq Sq. Mt Qm Mq Ka . m	Kg Kr	Scatole Box Karton Boite Saja Коробки	Mq Sq. Mt Qm Mq Ka . m	Kg Kr	Spessore Thickness Stärke Épaisseur Espesor Толщина
20x20	37	1,48	18,87	75	111,00	1.415,27	7,5
20x20 Pav.	30	1,20	20,28	54	64,80	1.095,15	8,0
10x10 Modul	100	1,00	13,50	72	72,00	972,05	7,0
10x10 Punto Colla	96	1,00	12,96	66	66,02	855,64	7,0
10x10 Pav. Grip Modul	100	1,00	13,50	72	72,00	972,05	7,0
10x30	36	1,08	16,74	66	71,28	1.105,12	7,5
10x20 Battiscopa a Sguscia	25	5 ml	9,87	-	-	-	7,5
3x20 Canaletta Esterna	10	0,06	0,70	-	-	-	7,5
3x10 Angolo Interno	10	0,03	0,35	-	-	-	7,5
3x10 Angolo Esterno	10	0,03	0,35	-	-	-	7,5
3x20 Canaletta Interna	10	0,06	0,70	-	-	-	7,5
3x3 Piede	4	-	0,04	-	-	-	7,5
3x3 Unghia Interna	4	-	0,04	-	-	-	7,5



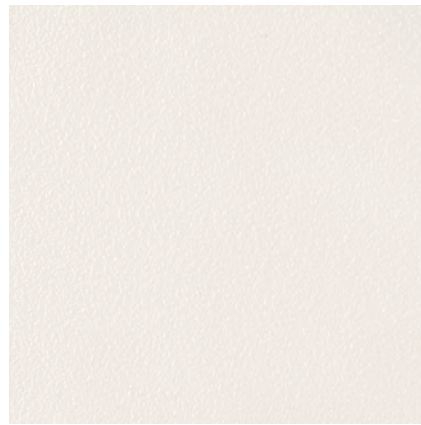
SystemC – Quarz

- Monocottura • Single Firing • Monocuisson • Einmalbrand • Monococción • Плитка Однократного Обжига

 **Naturale/Matt**
20x20



Conforme • According to • Conforme •
Gemäß • Conforme • Lorem Ipsus
UNI EN 14411 - H B1b



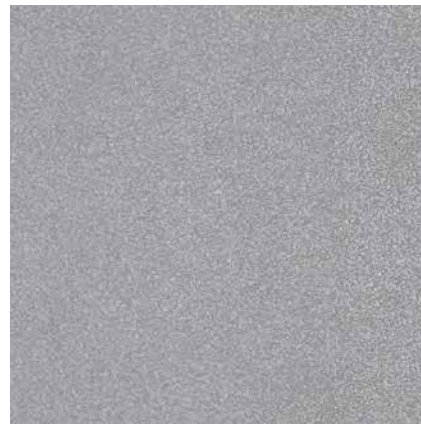
Quarz Bianco (Bianco New)

G



Quarz Grigio

G



Quarz Cemento

F



Quarz Sabbia (Cream)

G



Quarz Tortora

F



Quarz Blu



F

Formati • Sizes • Formats • Formate • Formatos • Форматы



20x20

- MJEQ Quarz Bianco (Bianco New)
- MJ67 Quarz Grigio
- MJ68 Quarz Cemento
- MJEU Quarz Sabbia (Cream)
- MJ6B Quarz Tortora
- MJ69 Quarz Blu

Imballi Packing Verpackungen Emballages Embalajes Упаковки	 Pezzi Pieces Stck Pièces Piezas Штуки	Mq Sq. Mt Qm Mq Mq Кв . м	Kg Kr	 Scatole Box Karton Boite Caja Коробки	Mq Sq. Mt Qm Mq Mq Кв . м	Kg Kr	Spessore Thickness Stärke Epaisseur Espesor Толщина
20x20	30	1,20	20,37	54	64,80	1.100,17	8,0

