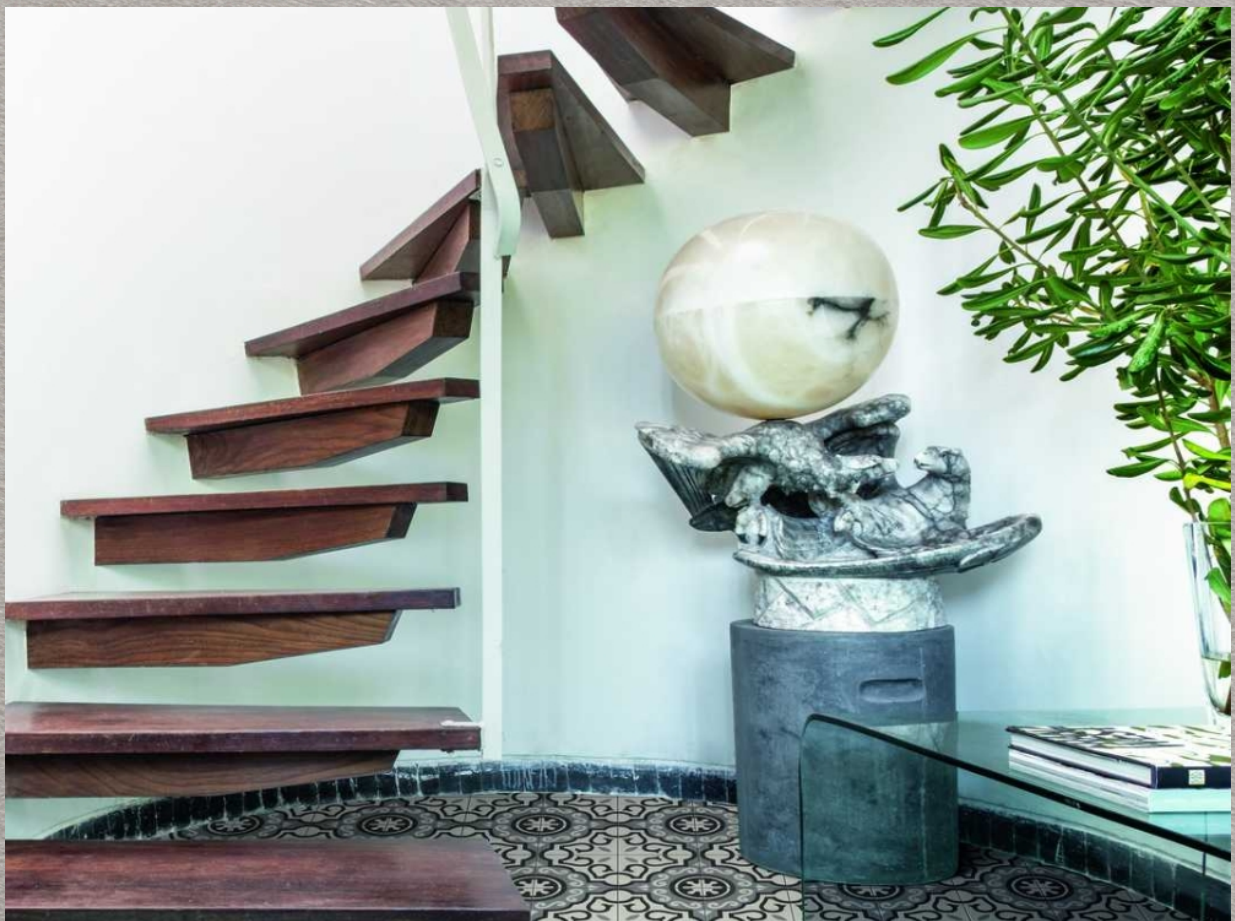


CROGIOLO

D_Segni



MARAZZI

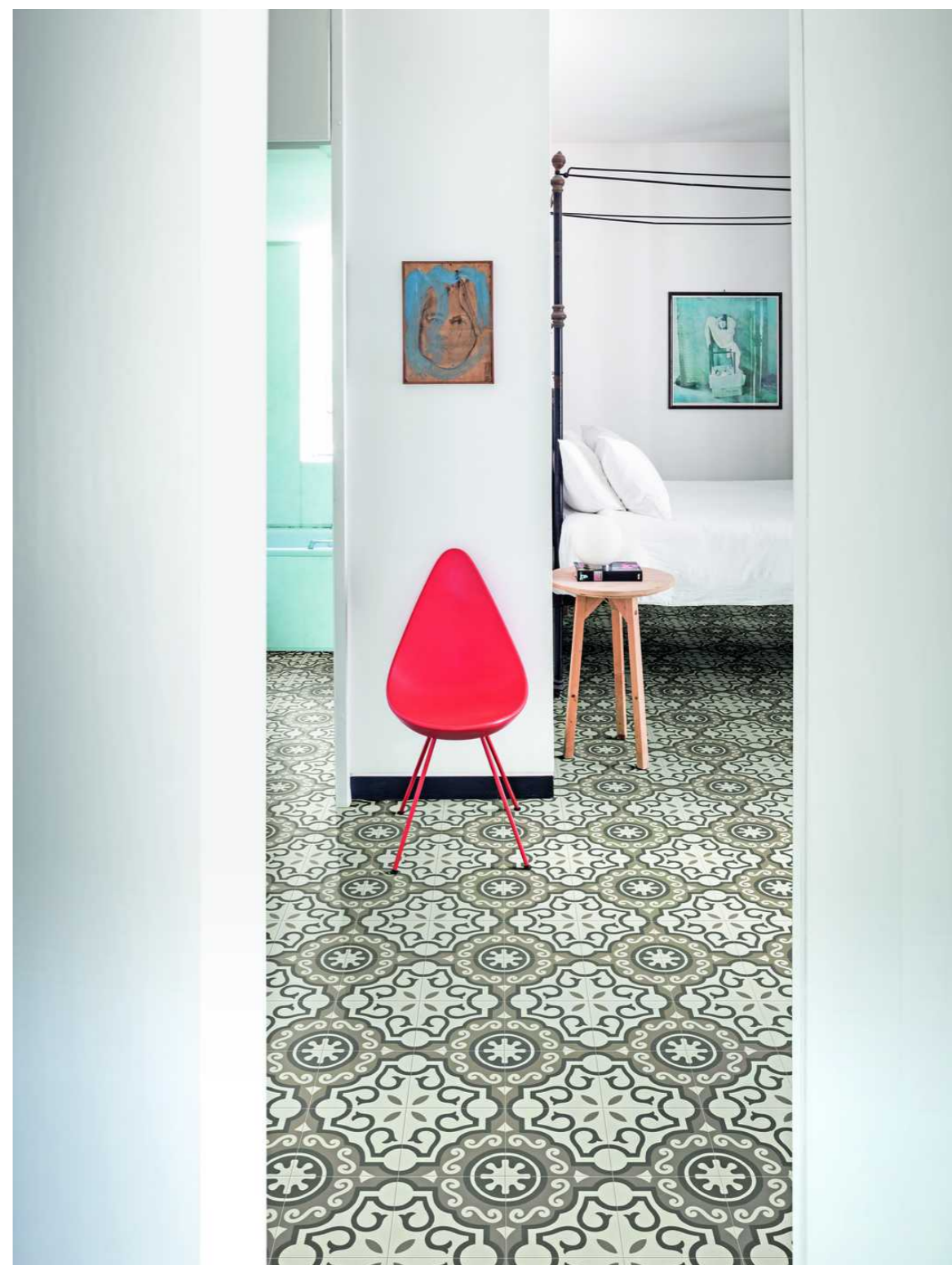


D_Segni

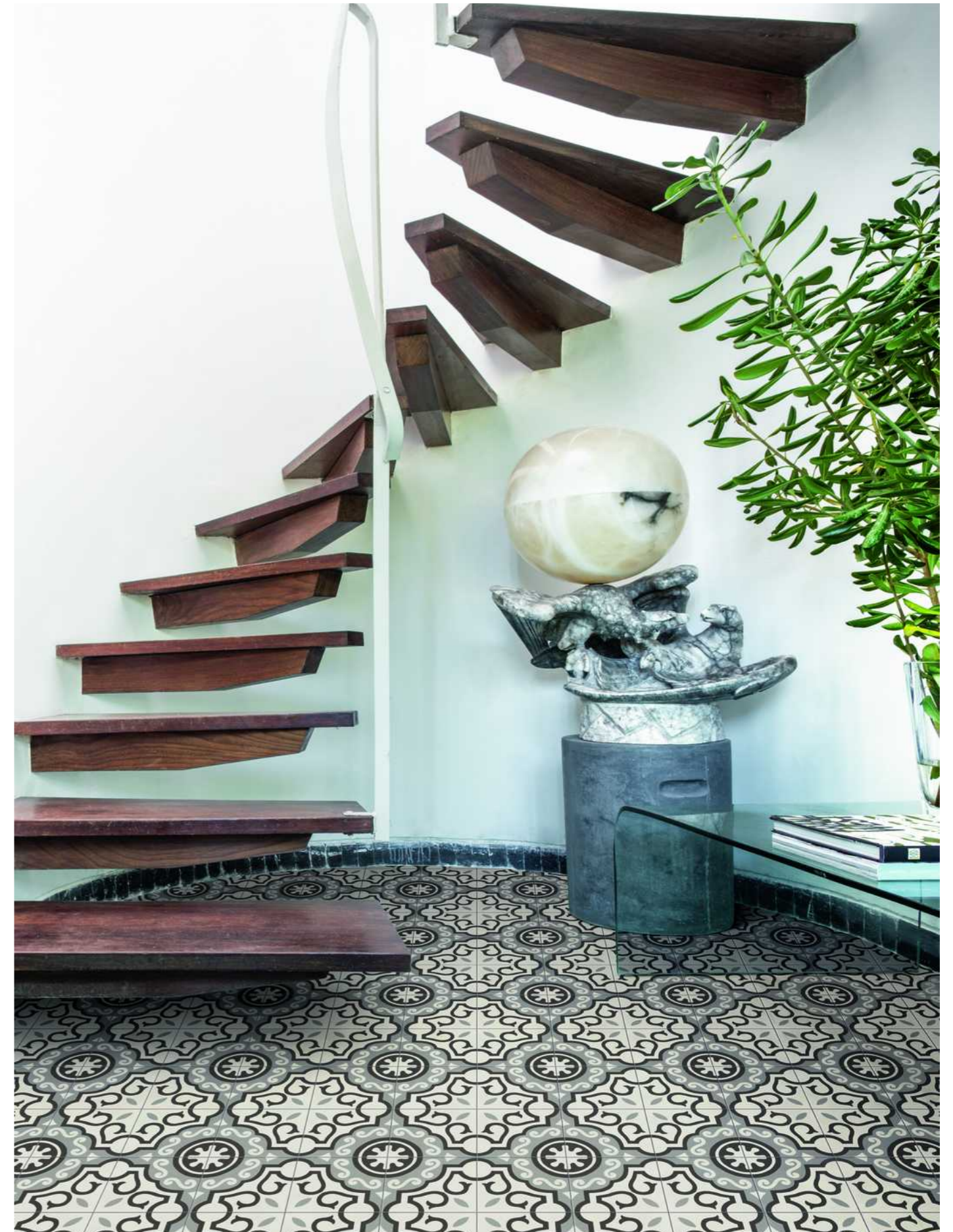
Micro, macro, geometric, floral, classical, vintage, metropolitan: the new D_Segni collection uses a mix of inputs in a stoneware reinterpretation of Italy's lovely traditional hand-made cement tiles, in the small 20x20 cm size. 7 warm and cold colours and 19 different patterns make up the Mix Carpet, the most daring decorative feature, alongside the micro and macro versions of the traditional floral and geometrical cement tile motifs, updated with a sharper, more contemporary 'take' on the product, which makes it extremely versatile.



MOUT D_Segni Decoro Mix Freddi 20x20cm
MOUE D_Segni Micro 4 Freddi 20x20cm



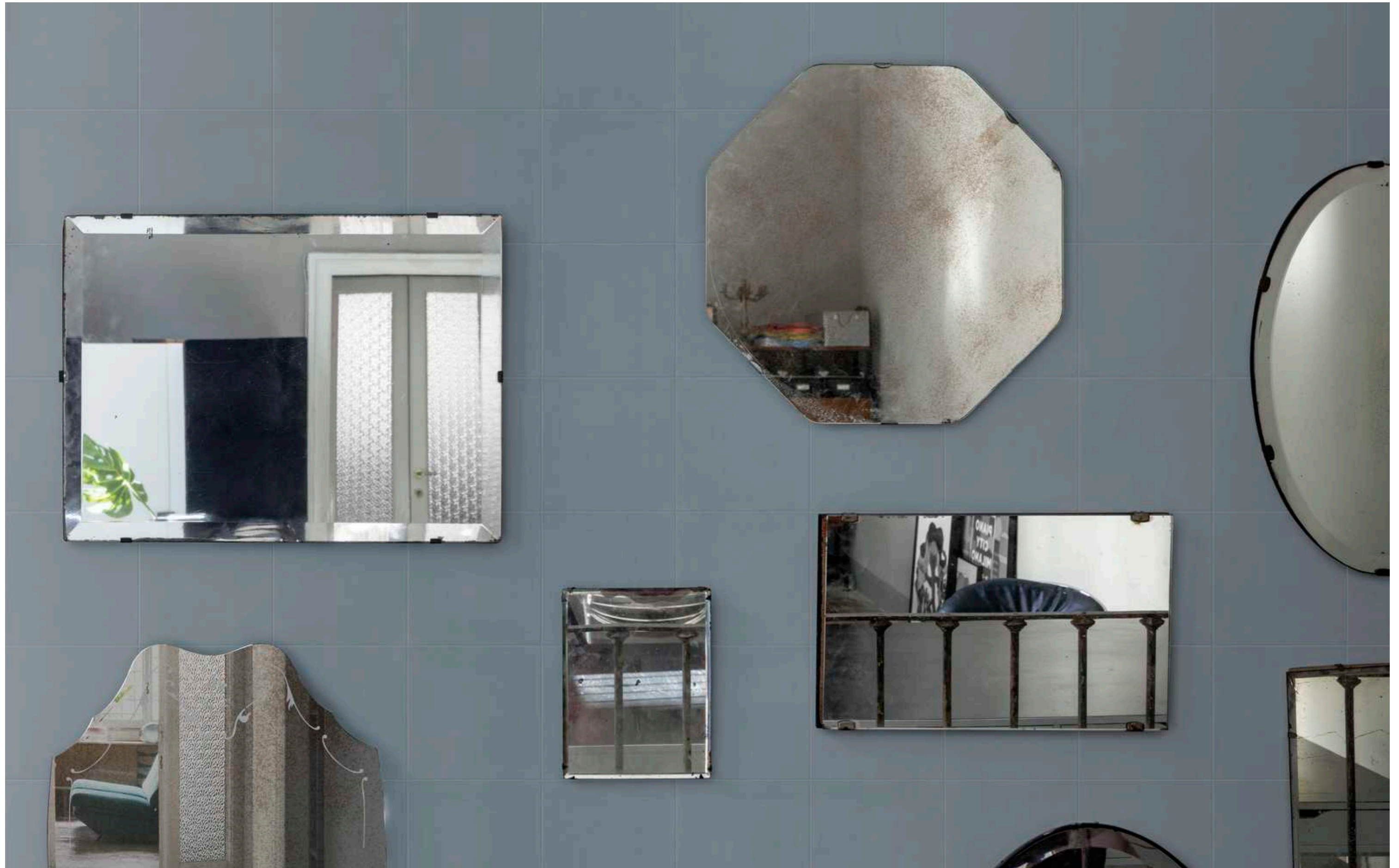
MOUQ D_Segni Macro 2 Caldi 20x20cm













D_Segni Index

M2JG D_Segni Shadow 20x20cm
M0UD D_Segni Micro 3 Freddi 20x20cm

D_Segni

- Porcelain Stoneware



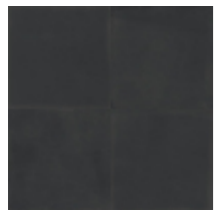
Chalk

| Formato | Superfici | Codice | Descrizione | Spessore | Rett. | Caratteristiche tecniche | Utilizzo | Premium Tech | R | BCR | Pendulum Class | Pend. PTV >36 | Australian pendulum | DCOF | Destinazioni d'uso | V | Pezzi per scatola | Mq | Kg | Scatole per pallet | Mq | Kg |
|---------|-----------|--------|---------------|----------|-------|---------------------------------------|--------------|--------------|----|--------|----------------|---------------|---------------------|---------|--------------------|----|-------------------|------|-------|--------------------|-------|----------|
| 20x20cm | Natural | M2JC | D_segni Chalk | MM 10 | | Frost proof, Resistance deep abrasion | Floor & Wall | | R9 | > 0.40 | Class 1 | | | >= 0.42 | H | V2 | 24 | 0,96 | 20,52 | 54 | 51,84 | 1.108,17 |



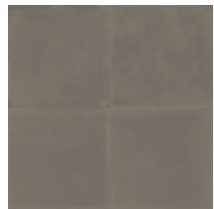
Denim

| Formato | Superfici | Codice | Descrizione | Spessore | Rett. | Caratteristiche tecniche | Utilizzo | Premium Tech | R | BCR | Pendulum Class | Pend. PTV >36 | Australian pendulum | DCOF | Destinazioni d'uso | V | Pezzi per scatola | Mq | Kg | Scatole per pallet | Mq | Kg |
|---------|-----------|--------|---------------|----------|-------|---------------------------------------|--------------|--------------|----|--------|----------------|---------------|---------------------|---------|--------------------|----|-------------------|------|-------|--------------------|-------|----------|
| 20x20cm | Natural | M2JJ | D_segni Denim | MM 10 | | Frost proof, Resistance deep abrasion | Floor & Wall | | R9 | > 0.40 | Class 1 | | | >= 0.42 | G | V2 | 24 | 0,96 | 18,91 | 54 | 51,84 | 1.021,08 |



Midnight

| Formato | Superfici | Codice | Descrizione | Spessore | Rett. | Caratteristiche tecniche | Utilizzo | Premium Tech | R | BCR | Pendulum Class | Pend. PTV >36 | Australian pendulum | DCOF | Destinazioni d'uso | V | Pezzi per scatola | Mq | Kg | Scatole per pallet | Mq | Kg |
|---------|-----------|--------|------------------|----------|-------|---------------------------------------|--------------|--------------|----|--------|----------------|---------------|---------------------|---------|--------------------|----|-------------------|------|-------|--------------------|-------|--------|
| 20x20cm | Natural | M2JF | D_segni Midnight | MM 10 | | Frost proof, Resistance deep abrasion | Floor & Wall | | R9 | > 0.40 | Class 1 | | | >= 0.42 | G | V2 | 24 | 0,96 | 18,38 | 54 | 51,84 | 992,34 |



Mud

| Formato | Superfici | Codice | Descrizione | Spessore | Rett. | Caratteristiche tecniche | Utilizzo | Premium Tech | R | BCR | Pendulum Class | Pend. PTV >36 | Australian pendulum | DCOF | Destinazioni d'uso | V | Pezzi per scatola | Mq | Kg | Scatole per pallet | Mq | Kg |
|---------|-----------|--------|-------------|----------|-------|---------------------------------------|--------------|--------------|----|--------|----------------|---------------|---------------------|---------|--------------------|----|-------------------|------|-------|--------------------|-------|----------|
| 20x20cm | Natural | M2JE | D_segni Mud | MM 10 | | Frost proof, Resistance deep abrasion | Floor & Wall | | R9 | > 0.40 | Class 1 | | | >= 0.42 | G | V2 | 24 | 0,96 | 21,08 | 54 | 51,84 | 1.138,59 |



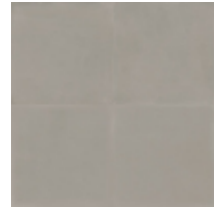
Sand

| Formato | Superfici | Codice | Descrizione | Spessore | Rett. | Caratteristiche tecniche | Utilizzo | Premium Tech | R | BCR | Pendulum Class | Pend. PTV >36 | Australian pendulum | DCOF | Destinazioni d'uso | V | Pezzi per scatola | Mq | Kg | Scatole per pallet | Mq | Kg |
|---------|-----------|--------|--------------|----------|-------|---------------------------------------|--------------|--------------|----|--------|----------------|---------------|---------------------|---------|--------------------|----|-------------------|------|-------|--------------------|-------|----------|
| 20x20cm | Natural | M2JD | D_segni Sand | MM 10 | | Frost proof, Resistance deep abrasion | Floor & Wall | | R9 | > 0.40 | Class 1 | | | >= 0.42 | G | V2 | 24 | 0,96 | 20,75 | 54 | 51,84 | 1.120,38 |



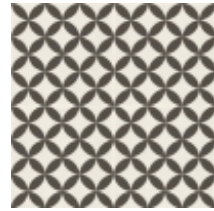
Shadow

| Formato | Superfici | Codice | Descrizione | Spessore | Rett. | Caratteristiche tecniche | Utilizzo | Premium Tech | R | BCR | Pendulum Class | Pend. PTV >36 | Australian pendulum | DCOF | Destinazioni d'uso | V | Pezzi per scatola | Mq | Kg | Scatole per pallet | Mq | Kg |
|---------|-----------|--------|----------------|----------|-------|---------------------------------------|--------------|--------------|----|--------|----------------|---------------|---------------------|---------|--------------------|----|-------------------|------|-------|--------------------|-------|----------|
| 20x20cm | Natural | M2JG | D_segni Shadow | MM 10 | | Frost proof, Resistance deep abrasion | Floor & Wall | | R9 | > 0.40 | Class 1 | | | >= 0.42 | G | V2 | 24 | 0,96 | 18,97 | 54 | 51,84 | 1.024,51 |



Smoke

| Formato | Superfici | Codice | Descrizione | Spessore | Rett. | Caratteristiche tecniche | Utilizzo | Premium Tech | R | BCR | Pendulum Class | Pend. PTV >36 | Australian pendulum | DCOF | Destinazioni d'uso | V | Pezzi per scatola | Mq | Kg | Scatole per pallet | Mq | Kg |
|---------|-----------|--------|---------------|----------|-------|---------------------------------------|--------------|--------------|----|--------|----------------|---------------|---------------------|---------|--------------------|----|-------------------|------|-------|--------------------|-------|----------|
| 20x20cm | Natural | M2JH | D_segni Smoke | MM 10 | | Frost proof, Resistance deep abrasion | Floor & Wall | | R9 | > 0.40 | Class 1 | | | >= 0.42 | G | V2 | 24 | 0,96 | 18,81 | 54 | 51,84 | 1.015,67 |



| Formato | Superfici | Codice | Descrizione | Spessore | Rett. | Caratteristiche tecniche | Utilizzo | Premium Tech | R | BCR | Pendulum Class | Pend. PTV >36 | Australian pendulum | DCOF | Destinazioni d'uso | V | Pezzi per scatola | Mq | Kg | Scatole per pallet | Mq | Kg |
|---------|-----------|--------|------------------------|----------|-------|---------------------------------------|--------------|--------------|----|--------|----------------|---------------|---------------------|---------|--------------------|----|-------------------|------|-------|--------------------|-------|----------|
| 20x20cm | Natural | MOUA | D_segni Micro 1 Freddi | MM 10 | | Frost proof, Resistance deep abrasion | Floor & Wall | | R9 | > 0.40 | Class 1 | | | >= 0.42 | H | V2 | 24 | 0,96 | 20,87 | 54 | 51,84 | 1.126,96 |
| 20x20cm | Natural | MOUC | D_segni Micro 2 Freddi | MM 10 | | Frost proof, Resistance deep abrasion | Floor & Wall | | | | | | | | | | 24 | 0,96 | 18,60 | 54 | 51,84 | 1.004,65 |
| 20x20cm | Natural | MOUD | D_segni Micro 3 Freddi | MM 10 | | Frost proof, Resistance deep abrasion | Floor & Wall | | R9 | > 0.40 | Class 1 | | | >= 0.42 | H | V2 | 24 | 0,96 | 19,20 | 54 | 51,84 | 1.036,80 |
| 20x20cm | Natural | MOUE | D_segni Micro 4 Freddi | MM 10 | | Frost proof, Resistance deep abrasion | Floor & Wall | | R9 | > 0.40 | Class 1 | | | >= 0.42 | H | V2 | 24 | 0,96 | 20,17 | 54 | 51,84 | 1.089,08 |
| 20x20cm | Natural | MOUF | D_segni Micro 1 Caldi | MM 10 | | Frost proof, Resistance deep abrasion | Floor & Wall | | R9 | > 0.40 | Class 1 | | | >= 0.42 | H | V2 | 24 | 0,96 | 18,60 | 54 | 51,84 | 1.004,65 |
| 20x20cm | Natural | MOUG | D_segni Micro 2 Caldi | MM 10 | | Frost proof, Resistance deep abrasion | Floor & Wall | | R9 | > 0.40 | Class 1 | | | >= 0.42 | H | V2 | 24 | 0,96 | 20,00 | 54 | 51,84 | 1.080,00 |
| 20x20cm | Natural | MOUH | D_segni Micro 3 Caldi | MM 10 | | Frost proof, Resistance deep abrasion | Floor & Wall | | R9 | > 0.40 | Class 1 | | | >= 0.42 | H | V2 | 24 | 0,96 | 18,75 | 54 | 51,84 | 1.012,50 |
| 20x20cm | Natural | MOUJ | D_segni Micro 4 Caldi | MM 10 | | Frost proof, Resistance deep abrasion | Floor & Wall | | R9 | > 0.40 | Class 1 | | | >= 0.42 | H | V2 | 24 | 0,96 | 19,20 | 54 | 51,84 | 1.036,80 |
| 20x20cm | Natural | MOUK | D_segni Macro 1 Freddi | MM 10 | | Frost proof, Resistance deep abrasion | Floor & Wall | | R9 | > 0.40 | Class 1 | | | >= 0.42 | H | V2 | 24 | 0,96 | 20,87 | 54 | 51,84 | 1.126,96 |
| 20x20cm | Natural | MOUL | D_segni Macro 2 Freddi | MM 10 | | Frost proof, Resistance deep abrasion | Floor & Wall | | R9 | > 0.40 | Class 1 | | | >= 0.42 | H | V2 | 24 | 0,96 | 18,46 | 54 | 51,84 | 996,92 |
| 20x20cm | Natural | MOUM | D_segni Macro 3 Freddi | MM 10 | | Frost proof, Resistance deep abrasion | Floor & Wall | | R9 | > 0.40 | Class 1 | | | >= 0.42 | H | V2 | 24 | 0,96 | 19,20 | 54 | 51,84 | 1.036,80 |
| 20x20cm | Natural | MOUN | D_segni Macro 4 Freddi | MM 10 | | Frost proof, Resistance deep abrasion | Floor & Wall | | R9 | > 0.40 | Class 1 | | | >= 0.42 | H | V2 | 24 | 0,96 | 20,69 | 54 | 51,84 | 1.117,24 |
| 20x20cm | Natural | MOUP | D_segni Macro 1 Caldi | MM 10 | | Frost proof, Resistance deep abrasion | Floor & Wall | | R9 | > 0.40 | Class 1 | | | >= 0.42 | H | V2 | 24 | 0,96 | 20,69 | 54 | 51,84 | 1.117,24 |
| 20x20cm | Natural | MOUQ | D_segni Macro 2 Caldi | MM 10 | | Frost proof, Resistance deep abrasion | Floor & Wall | | R9 | > 0.40 | Class 1 | | | >= 0.42 | H | V2 | 24 | 0,96 | 20,51 | 54 | 51,84 | 1.107,69 |
| 20x20cm | Natural | MOUR | D_segni Macro 3 Caldi | MM 10 | | Frost proof, Resistance deep abrasion | Floor & Wall | | R9 | > 0.40 | Class 1 | | | >= 0.42 | H | V2 | 24 | 0,96 | 19,05 | 54 | 51,84 | 1.028,57 |
| 20x20cm | Natural | MOUS | D_segni Macro 4 Caldi | MM 10 | | Frost proof, Resistance deep abrasion | Floor & Wall | | R9 | > 0.40 | Class 1 | | | >= 0.42 | H | V2 | 24 | 0,96 | 19,20 | 54 | 51,84 | 1.036,80 |



Decoro Mix

| Formato | Superfici | Codice | Descrizione | Spessore | Rett. | Caratteristiche tecniche | Utilizzo | Premium Tech | R | BCR | Pendulum Class | Pend. PTV >36 | Australian pendulum | DCOF | Destinazioni d'uso | V | Pezzi per scatola | Mq | Kg | Scatole per pallet | Mq | Kg |
|---------|-----------|--------|---------------------------|----------|-------|---------------------------------------|--------------|--------------|----|--------|----------------|---------------|---------------------|---------|--------------------|----|-------------------|------|-------|--------------------|-------|----------|
| 20x20cm | Natural | MOUT | D_segni Decoro Mix Freddi | MM 10 | | Frost proof, Resistance deep abrasion | Floor & Wall | | R9 | > 0.40 | Class 1 | | | >= 0.42 | H | V2 | 24 | 0,96 | 19,05 | 54 | 51,84 | 1.028,57 |
| 20x20cm | Natural | MOUU | D_segni Decoro Mix Caldi | MM 10 | | Frost proof, Resistance deep abrasion | Floor & Wall | | R9 | > 0.40 | Class 1 | | | >= 0.42 | H | V2 | 24 | 0,96 | 18,46 | 54 | 51,84 | 996,92 |

Legenda

Destinazioni d'uso

D
Tiles suitable only for residential bathrooms and bedrooms; any type of abrasion must be avoided.

E
Tiles suitable for any room of a house except for entrance areas and kitchens. Low stress abrasive wear.

F
Tiles suitable for any room of a house without direct access from the outside or access not protected by doormats. Average stress abrasive wear.

G
Materials suitable for rooms subject to medium-heavy abrasion, such as detached houses and light-traffic commercial buildings.

H
Materials suitable for situations of relatively hard abrasion in environments without protection against scratching, both public and private.

Variazioni cromatiche

V0
Monochromatic - V0: tiles of the same shade are very uniform, in just one colour

V1
Uniform appearance - V1: uniform colour with only minimal differences between tiles in the same production run

V2
Slight variation - V2: clearly distinguishable differences in texture and pattern within the same production run

V3
Moderate variation - V3: significant variation in texture, pattern and colour from tile to tile within the same production run. The colour range should be viewed before selecting the material

V4
Substantial/random variation - V4: random differences from tile to tile. One tile may have totally different texture and colour from another. The colour range should be viewed before selecting the material

Certificazioni



ISO 14001



Recycled Material



CAM Ubersetto



ISO 45001



Greenguard Certification



CCC



ISO 9001



LEED Credits



CE 001MRZI



Green Building Council



FDES



UKCA 001MRZUK



EPD Italy



Declare



SASO



EPD Spain



HPD

© Copyright by Marazzi Group S.r.l., 2023.
All rights reserved, Marazzi Group Srl a Socio Unico
Viale Regina Pacis, 39 41049 Sassuolo (MO) Italy
T +39 0536 860800 F +39 0536 860644
info@marazzi.it www.marazzi.it

La riproduzione dei colori è approssimativa. Le tabelle con i dati riferiti ai contenuti per scatole ed ai pesi degli imballi sono aggiornate al momento della stampa del catalogo, pertanto i dati elencati possono subire variazioni.

Marazzi Group ha la facoltà esclusiva di modificare e sostituire, anche solo parzialmente i componenti dei sistemi illustrati in questo folder, senza l'obbligo di darne preavviso.



MARAZZI